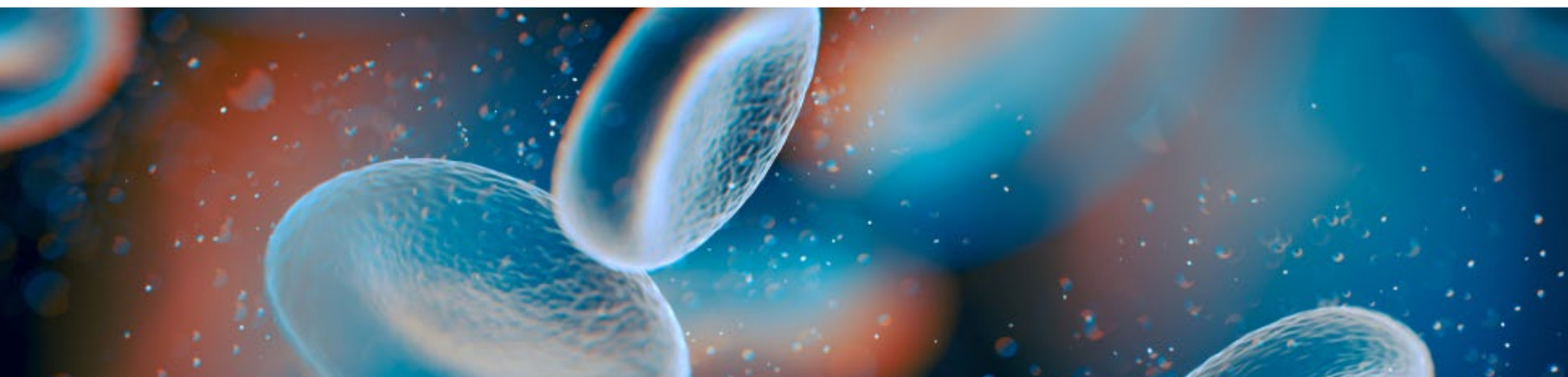


CARDIOMETABOLIC DISEASES



Boehringer Ingelheim welcomes collaborations with partners in **cardiometabolic diseases**, who share our passion for improving the health and wellbeing of animals, to help us find solutions to some of the biggest challenges in animal health today.

Pursuing Innovation

- Leveraging our expertise to discover and develop novel solutions for cardiometabolic diseases in cats and dogs
- Research focus on:
 - Canine mitral valve disease
 - Cardiomyopathies
 - Chronic kidney disease
 - Fibrosis
 - Diabetes.

Actively pursuing new partnerships in our areas of interest and open to a variety of partnership models to explore:

- Disease-modifying or palliative assets with novel modes of action
- Biomarkers/diagnostic tools enabling early disease detection and/or facilitating demonstration of treatment efficacy
- Novel models to establish efficacy for dogs or cats.

For more information visit:

<https://www.boehringer-ingelheim.com/partnering/working-together-in-ah/partnering-interests>

